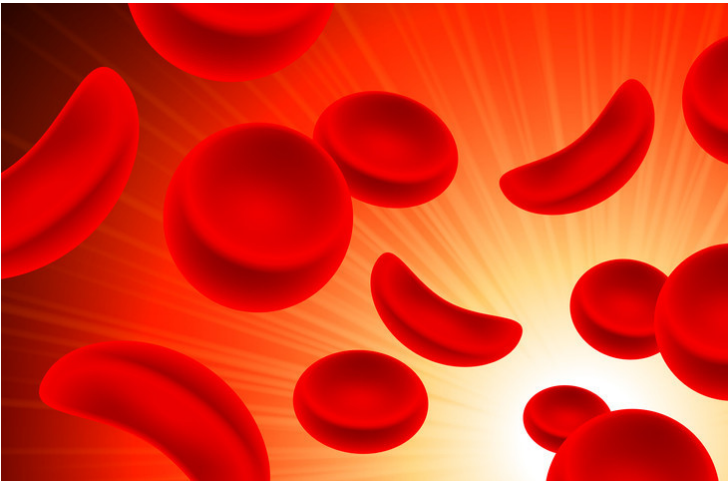


Mylab introduces indigenous point-of-care sickle cell anaemia test

14 June 2023 | News

Sickle-cell anaemia is a public health challenge as India is estimated to have the second-highest burden of the disease



Continuing with its effort to introduce quality diagnostic tests for diseases of public health importance, Pune-based startup Mylab Discovery Solutions has launched a strip-based, rapid point of care test, PathoCatch Sickle Cell Rapid Test for Sickle Cell Anaemia (SCA).

Approved by Central Drugs Standard Control Organisation (CDSCO), this test aims to transform the way healthcare professionals diagnose and manage SCA, offering rapid and accurate results at the patient's site. This will be instrumental in supporting the government's mission to eliminate SCA by 2047 from India.

Traditionally, diagnosing sickle cell anaemia has been a laborious and time-consuming process, involving blood sample collection, transportation to a laboratory, and subsequent analysis by skilled technicians. This lengthy process often results in delayed diagnosis and treatment, leading to increased morbidity and mortality rates.

By utilising cutting-edge technology, PathoCatch Sickle Cell Rapid Test can detect the presence of abnormal haemoglobin in a small blood sample within a few minutes. It can be used easily by healthcare professionals without the use of laboratory equipment.

The test is made up of three indicators, which detect the presence of haemoglobin A, S and C, allowing the user to rapidly distinguish between normal, carrier and sickle cell samples. It has a both combined sensitivity and specificity of 100%, making it one of the fastest and most accurate tests in India.