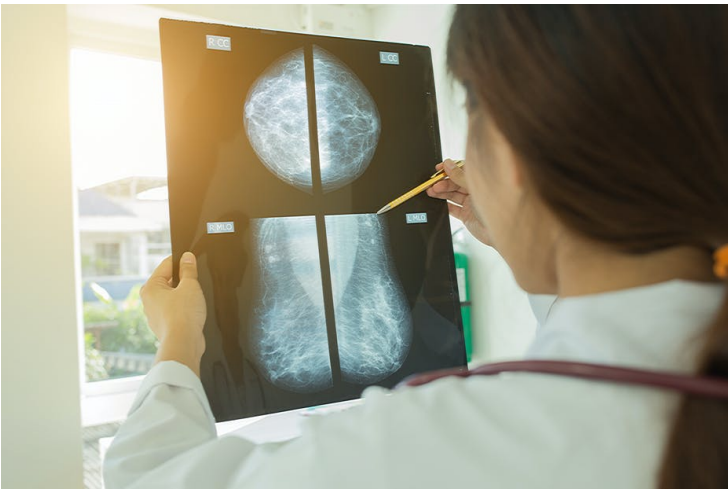


Lumos Accelerator onboards cancer diagnostic startups Onward Assist and ErlySign

12 April 2021 | News | By Manbeena Chawla

Lumos will provide clinical, technical and business advisory to help the startups scale



Lumos Accelerator has announced the addition of Onward Assist and ErlySign to its speed scaling programme. The startups were selected after a careful evaluation of their technological strengths and business capabilities.

Lumos will provide clinical, technical and business advisory to help the startups scale and will offer infrastructure credits to help defray certain operating expenses.

Lumos is a speed scaling ecosystem that helps early-stage healthcare startups grow through timely and powerful business and technical advisory services. They have partnered with premier healthcare organizations to provide valuable mentoring, advisory and business development services to enable startups to hit impressive growth trajectories.

The existing repertoire of companies under Lumos are Kronikare, AyuRythm, Alixir, and Raybaby continue to grow with the numerous speed scaling capabilities offered by Lumos.

Hyderabad based Onward Assist is an advanced cancer prognostics platform that helps Oncologists take better treatment decisions and improve outcomes. The company provides computer vision and ML-based automated diagnostic tools and treatment decision support tools used by Histopathologists, Radiologists, and Oncologists.

On the other hand, Nagpur based ErlySign develops non-invasive, early test kits for detecting oral cancer using saliva. ErlySign's solution is an easy, accurate, affordable, and painless way for early detection of Oral Cancer.