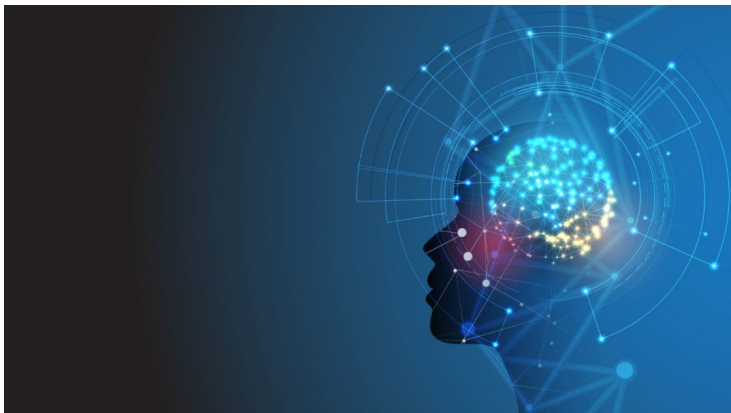


Wipro establishes Chair for AI at Swinburne University

06 February 2019 | News

Partnership to produce unique artificial intelligence and machine learning solutions and new IPs that will have a global impact.



Wipro Limited, a leading global information technology, consulting and business process services company, has announced setting up of the Chair for Artificial Intelligence (AI) at the Swinburne University of Technology, Melbourne, Australia.

Professor Ryszard Kowalczyk, currently the Director of Swinburne's Key Lab for Intelligent Software Systems, and the head of Artificial Intelligence and Intelligent Agent Technology research group at Swinburne has been appointed as the Professorial Chair of Artificial Intelligence.

Wipro and Swinburne University also plan to establish a joint innovation centre to conduct high-impact, industry-focused research in the areas of Artificial Intelligence (AI) and Machine Learning (ML) with specific applications for digital health and smart cities.

This partnership between Wipro and Swinburne University of Technology will focus on creating innovations in Artificial Intelligence (AI) that would benefit enterprises in Australia and the ASEAN region.