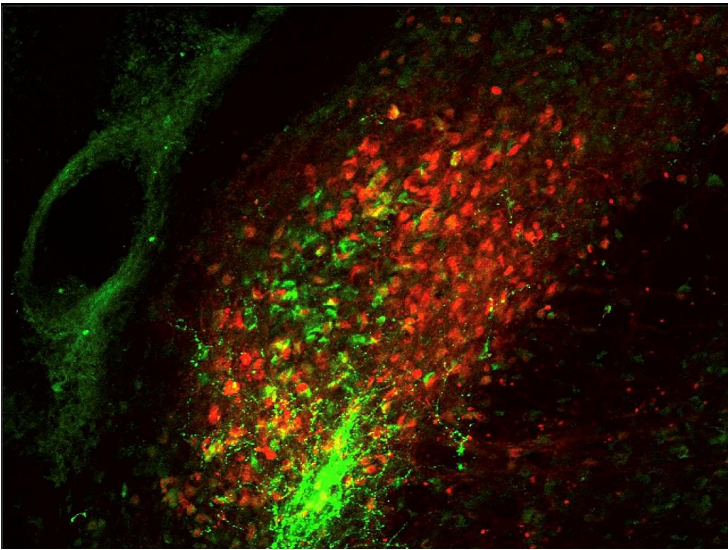


## NIH explains behavioral reaction to painful experiences

21 November 2018 | News

**With this knowledge of the brain activity, NIH provides new insight into how the body responds to harmful, painful stimuli**



Researchers at the National Centre for Complementary and Integrative Health (NCCIH), part of the National Institutes of Health, have identified activity in the brain that governs the reactions that are generated due to exposure to uncomfortable sensations.

Using heat as the source of discomfort, experiments conducted by the center's intramural program showed that bodily responses to pain are controlled by a neural pathway involving heightened activity in the spinal cord and two parts of the brainstem.

Alexander T. Chesler, Stadtman Investigator at NCCIH and senior author of the study said, "Much is known about local spinal cord circuits for simple reflexive responses, but the mechanisms underlying more complex behaviors remain poorly understood. We set out to describe the brain pathway that controls motor responses and involuntary behaviors when the body is faced with painful experiences."

Experiments showed that the parts of a brainstem involved in this circuit are the parabrachial nucleus (PBNI) and the dorsal reticular formation in the medulla (MdD). A specific group of nerve cells in the PBNI is activated by standing on a hot surface, triggering escape responses through connections to the MdD. These PBNI cells express a gene called *Tac1*, which codes for substances called tachykinins that participate in many functions in the body and contribute to multiple disease processes. The MdD cells involved in this circuit also express *Tac1*. A different group of cells in the PBNI participates in the aspects of the response to noxious heat that involve the forebrain.

Arbab Barik, postdoctoral fellow at NCCIH and one of the study's authors said, "Our data provide evidence that the PBNI produces streams of information with distinct functional significance. The brainstem-spinal cord pathway identified in this study selectively controls pain response and elicits appropriate behaviors based on sensory input."

"This kind of feed-forward circuitry is unique because it is an upward spiral. The more this pathway is activated by harmful activity, the more it reacts, leading to dramatic behavioral responses", added Chesler

With this knowledge of the brain activity, NIH provides new insight into how the body responds to harmful, painful stimuli. The mechanism described in this study can help researchers better understand how pain is encoded in the brain.

Further investigation of this circuit may increase understanding of how responses to pain are coordinated with other biological needs, such as feeding and reproduction. These findings may also offer opportunities to understand how the body becomes dysregulated during chronic pain.